

C JAM BLUES

BASS SLAM STEWART FROM "SLAM BAM"

TRANSCRIBED BY MARTIN HESS

♩ = 200



5
(A) C



F

C



13

Dm7

G7

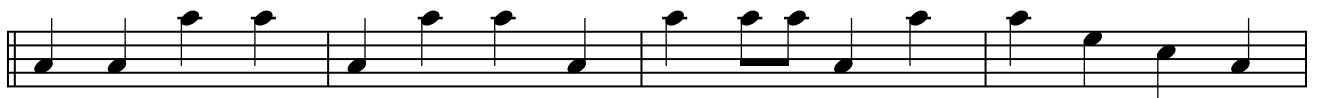
C

G7



17

(B) C



F

C



25

Dm7

G7

C

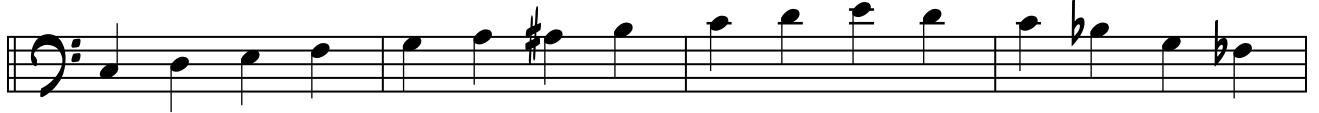
G7



29

C C

C7



F

C



37

DM7

G7

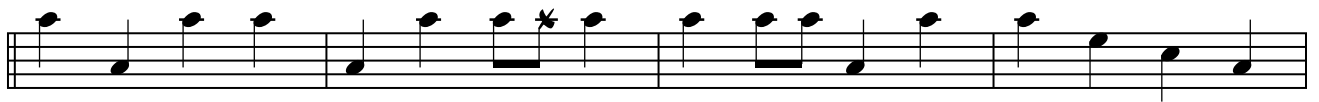
C

G7



41

D C



F

C



49

DM7

G7+

C

G7



53

E C



F

C



61

DM7

G7

CMA7

G7



65

F C



Musical staff with notes and chords F and C.

73

Musical staff with notes and chords DM7, G7, C, G7.

77

Musical staff with notes and chords G, C, marked ARCO.

Musical staff with notes and chord F.

85

Musical staff with notes and chords DM7, G7, C, G7.

89

Musical staff with notes and chord C, marked H.

Musical staff with notes and chords F and C.

97

Musical staff with notes and chords DM7, G7, C, G7.

101

Musical staff with notes and chord C, marked I.

Musical staff with notes and chords F and C.

109

4 / 5

C JAM BLUES

DM7

G7

C



113

(J) C

P122



F

DM7

G7



121

C

G7

(K) C



127

F

C



133

DM7

(L) C



137

F



143

DM7

G7

C

G7



149

(M) C

F

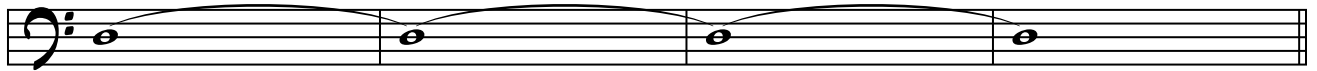


C



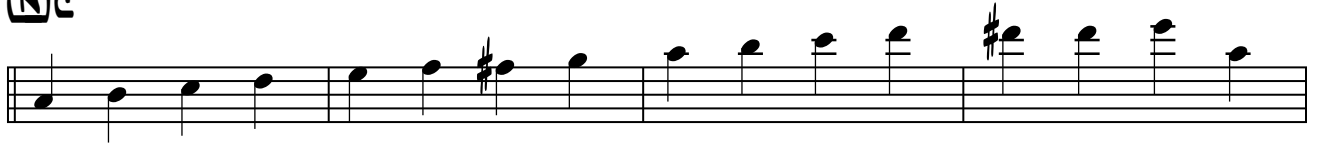
158

DM7



161

N C



169



173

O C



181



185



189

ARCO